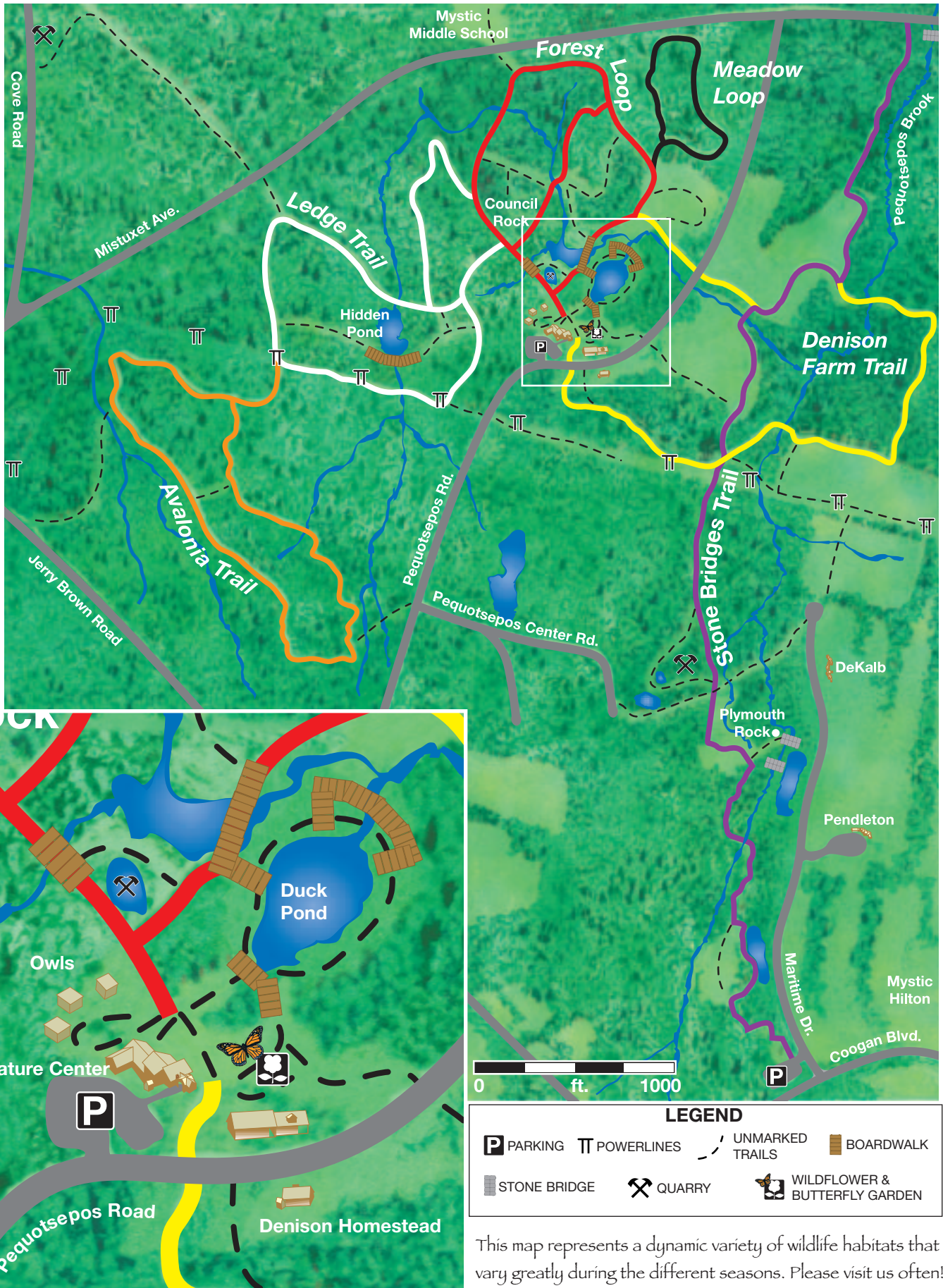




# Guide to Trails

Nature Center, Denison Farm and adjacent Avalonia Land Conservancy preserves.



This map represents a dynamic variety of wildlife habitats that vary greatly during the different seasons. Please visit us often!

## Trail Descriptions

**Forest Loop** (approx. Mileage) - Flat trail through mixed oak/hickory woodland, field, and rocky ledges, and past streams, marsh and ponds. Jogging stroller-friendly.

**Meadow Loop** (approx. Mileage) - Flat trail through early successional forest of Red Cedars, highbush Blueberry, & Red Maple. Narrow boardwalks traverse seasonally wet areas.

**Ledge Trail** (approx. Mileage) - Dramatic rock ledges overlooking wooded wetlands characterize this hilly trail. Used as a connector trail to the Avalonia Trail.

**Avalonia Trail** (approx. Mileage) - North of the power-line, this land belongs to the Avalonia Land Conservancy. The loop

includes, beech tree groves, interesting rock outcrops and ledges, and vernal pools.

**Denison Farm Trail** (approx. Mileage) - Wind through open fields and woods of White Pine, birch and oak. Also crosses Pequotsepos Brook.

**Stone Bridges Trail** (approx. Mileage) - This long trail runs from Mistuxet Avenue to Maritime Drive, connecting with the Denison Farm Trail. Crosses old stone bridges and an abandoned quarry pond and traverses Avalonia, Denison, and Mystic Marineliflife Aquarium properties.